

Hampshire Water Transfer and Water Recycling Project Environmental Statement – Figure 19.3 Complete ground investigation

VOLUME NUMBER: 6

PLANNING INSPECTORATE SCHEME NUMBER: WA010002

APPLICATION DOCUMENT REFERENCE: 6.3

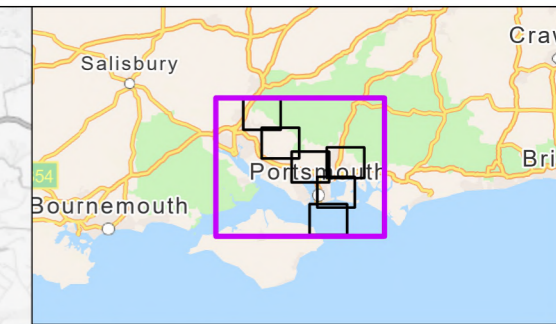
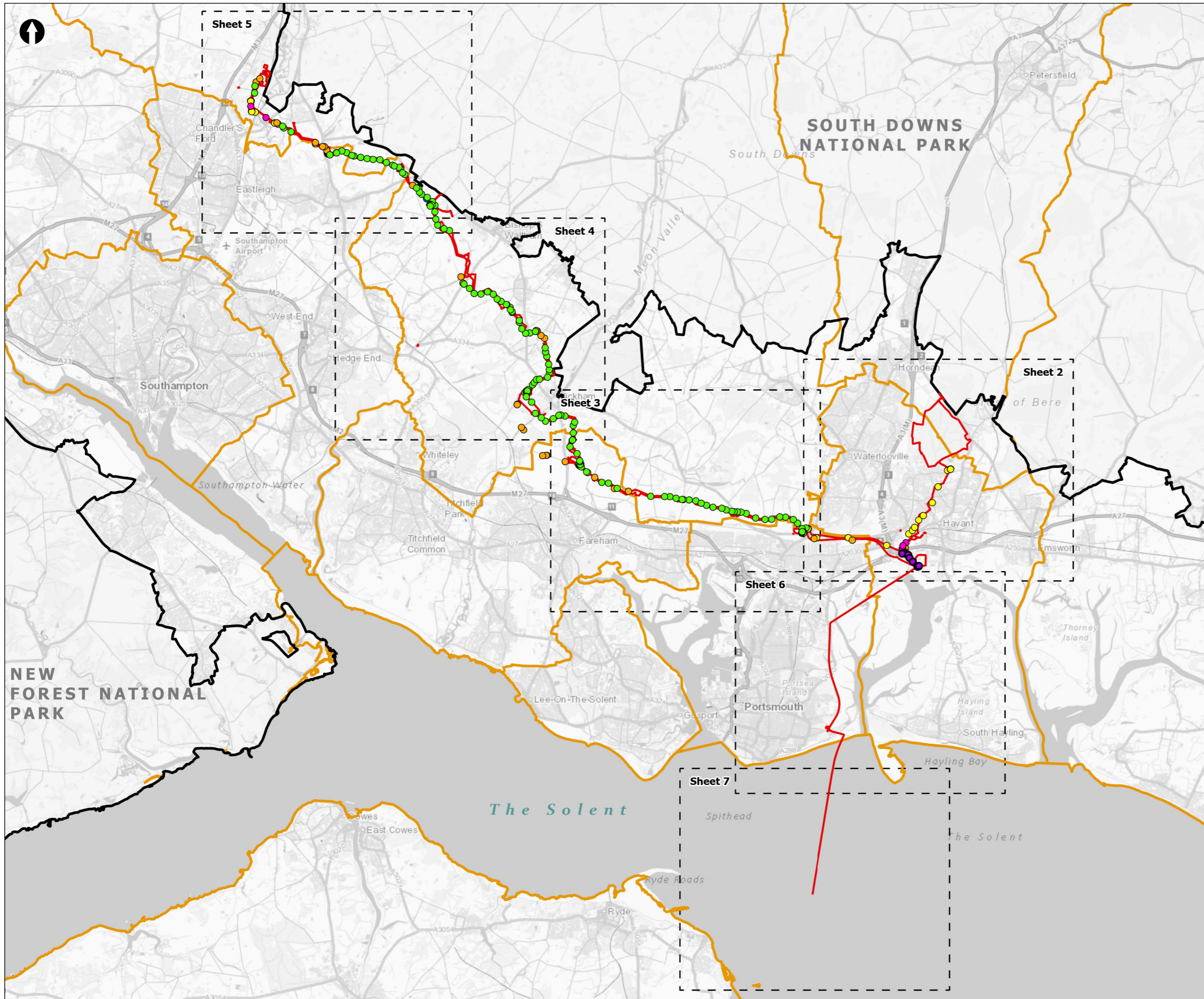
APFP REGULATION: 5(2)(a)

May 2026

Version 0



from
**Southern
Water** 



- Order Limits
- Sheet Extent Boxes 1:30K
- National Parks
- Local planning authorities
- Completed GI Locations Phase 0 (23/10/2023)
- Completed GI Locations Phase 1 - (16/08/2023)
- Completed GI Locations Phase 2 - (03/08/2023)
- Completed GI Locations Phase 3a (07/06/2024)
- Completed GI Locations Phase 3b (07/06/2024)
- Completed GI Locations Phase 3c (07/06/2024)

Coordinate system: British National Grid; Datum: OSGB 1936
 Data sources: © Crown copyright and database rights 2026 Ordnance Survey 0100031673. Contains OS data © Crown Copyright and database right 2020, Sources: Esri, TomTom, Garmin, FAO, NOAA, USGS, © OpenStreetMap contributors, and the GIS User Community

PROJECT TITLE
 Hampshire Water Transfer and Water Recycling Project

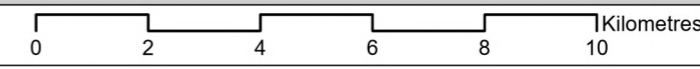


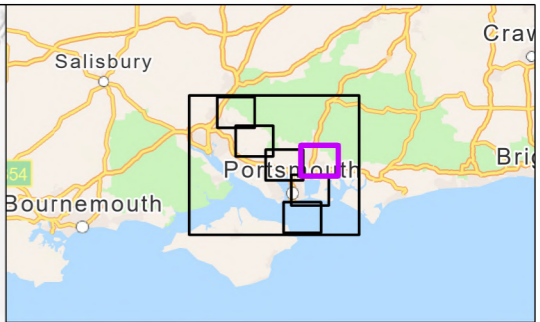
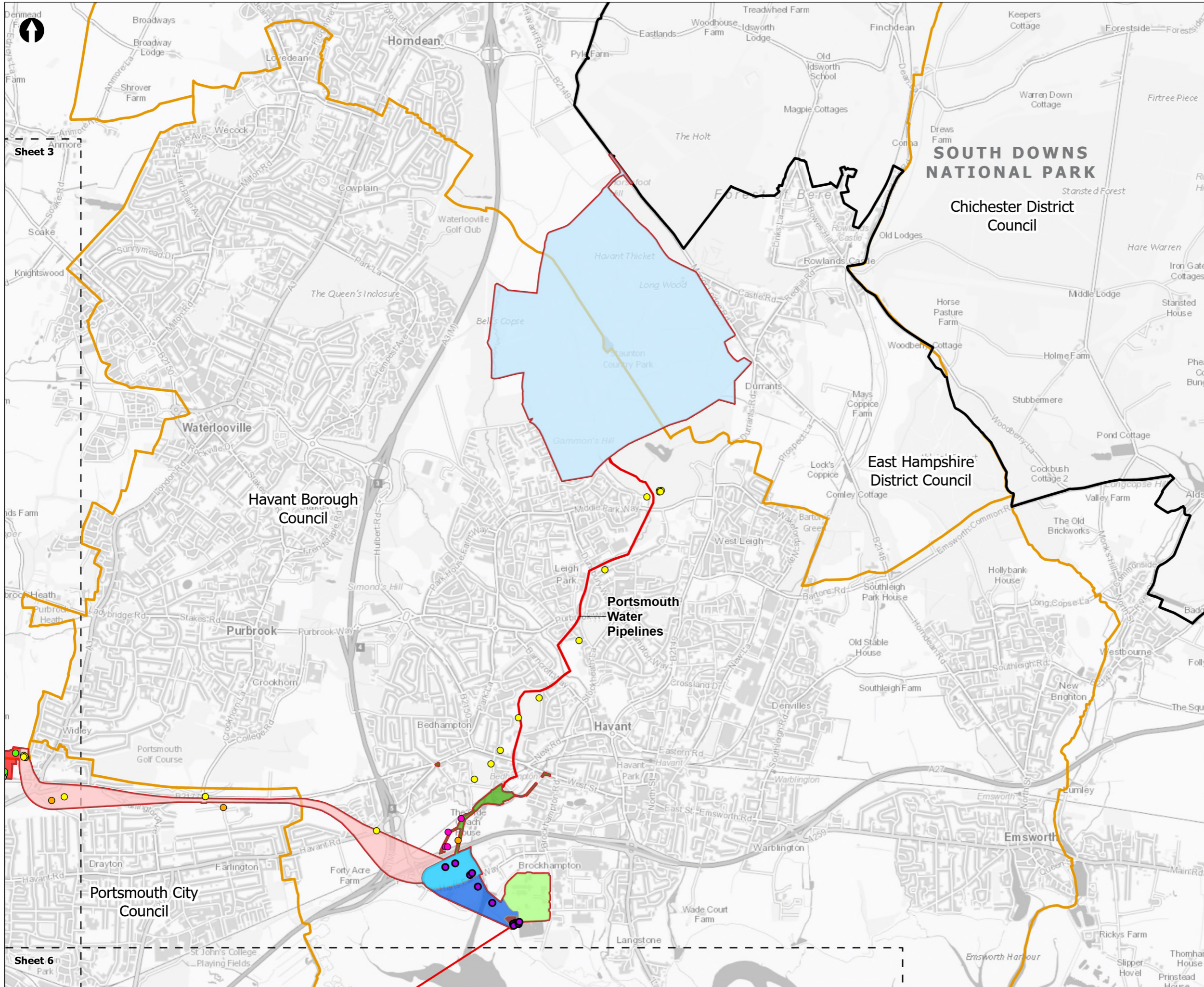
Figure 19.3
 Complete Ground Investigation
 Sheet 1 of 7

Drawn DL	GIS Checked MW	Checked MP	Approved AK
Scale at A3 1:135,000	Status Final	Revision 05	Security STD

Drawing Number
PC5223-RHD-ES-ZZ-D-Z-0083

© Southern Water 2026
 This document is issued for the party which commissioned it and for specific purposes connected with the captioned project only. It should not be relied upon by any other party or used for any other purpose.
 We accept no responsibility for the consequences of this document being relied upon by any other party, or being used for any other purpose, or containing any error or omission which is due to an error or omission in data supplied to us by other parties.





- Order Limits
 - Sheet Extent Boxes 1:30K
 - National Parks
 - Local planning authorities
 - Completed GI Locations Phase 0 (23/10/2023)
 - Completed GI Locations Phase 1 - (16/08/2023)
 - Completed GI Locations Phase 2 - (03/08/2023)
 - Completed GI Locations Phase 3a (07/06/2024)
 - Completed GI Locations Phase 3b (07/06/2024)
 - Completed GI Locations Phase 3c (07/06/2024)
- Proposed Development Components**
- Budds Farm Wastewater Treatment Works
 - Limits of Deviation for Budds Farm Pumping Station
 - Pipelines between the Water Recycling Plant site and Bedhampton Springs
 - Water Recycling Plant site
 - Pipelines between Budds Farm Wastewater Treatment Works and the Water Recycling Plant site
 - Havant Thicket Reservoir
- Pipeline between the Water Recycling Plant site and Otterbourne Water Supply Works**
- Section D: The Water Recycling Plant site to Portsdown Hill
 - Section E: Portsdown Hill to Boarhunt

Coordinate system: British National Grid; Datum: OSGB 1936
 Data sources: © Crown copyright and database rights 2026 Ordnance Survey 0100031673. Contains OS data © Crown Copyright and database right 2020, Sources: Esri, TomTom, Garmin, FAO, NOAA, USGS, © OpenStreetMap contributors, and the GIS User Community

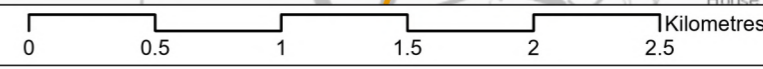
PROJECT TITLE
 Hampshire Water Transfer and Water Recycling Project

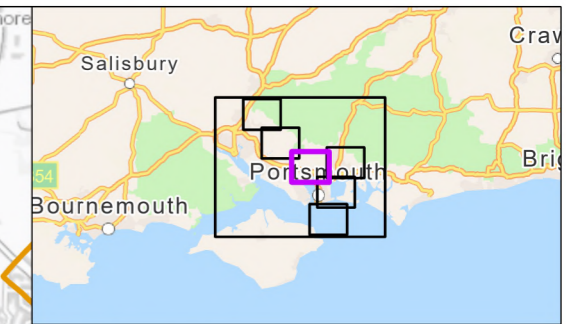
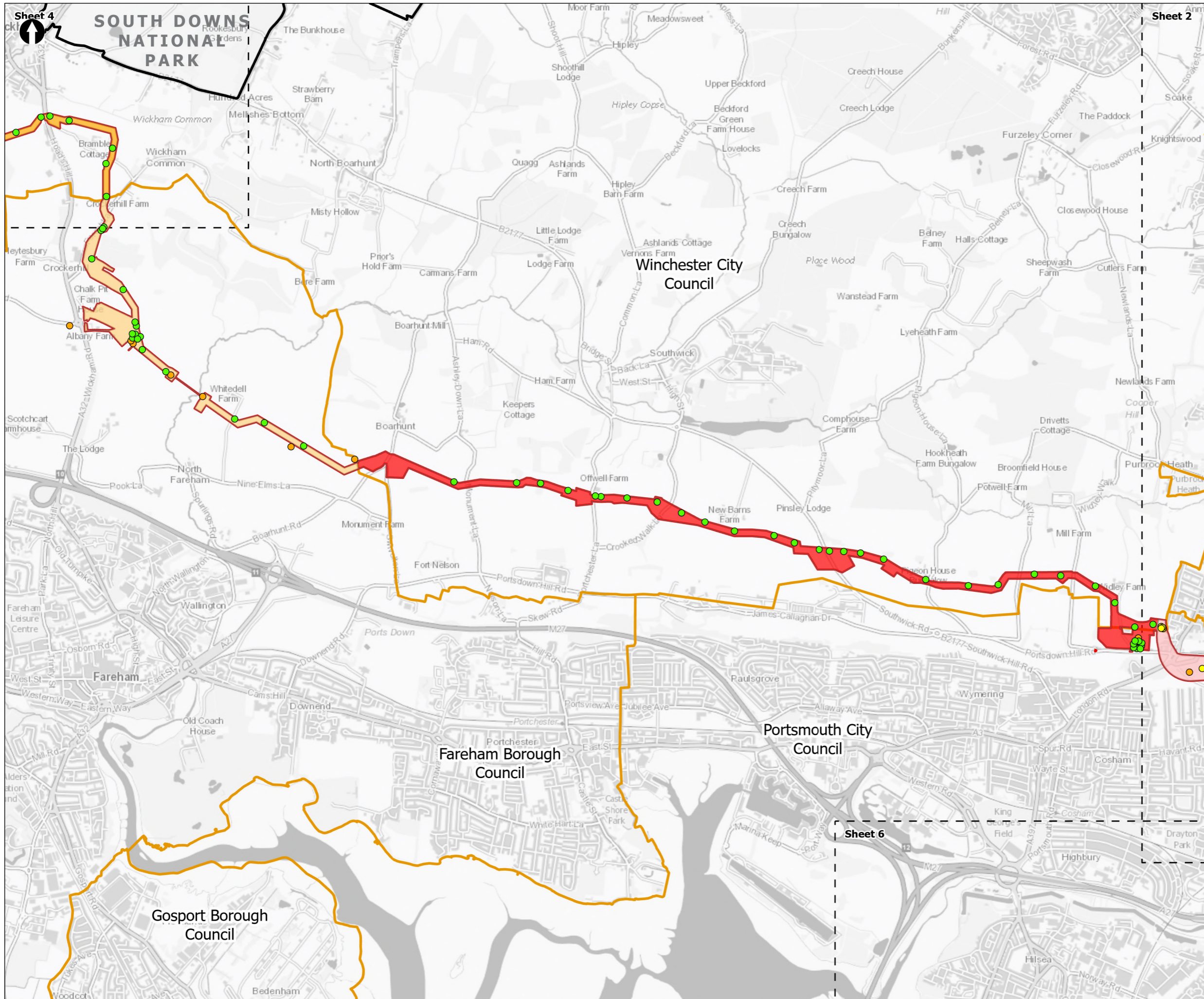


Figure 19.3
 Complete Ground Investigation
 Sheet 2 of 7

Drawn DL	GIS Checked MW	Checked MP	Approved AK
Scale at A3 1:30,000	Status Final	Revision 05	Security STD

Drawing Number
 PC5223-RHD-ES-ZZ-D-Z-0083





Order Limits

Sheet Extent Boxes 1:30K

National Parks

Local planning authorities

- Completed GI Locations Phase 1 - (16/08/2023)
- Completed GI Locations Phase 2 - (03/08/2023)
- Completed GI Locations Phase 3b (07/06/2024)
- Completed GI Locations Phase 3c (07/06/2024)

Pipeline between the Water Recycling Plant site and Otterbourne Water Supply Works

- Section D: The Water Recycling Plant site to Portsdown Hill
- Section E: Portsdown Hill to Boarhunt
- Section F: Boarhunt to Crockerhill
- Section G: Crockerhill to Wickham

Coordinate system: British National Grid; Datum: OSGB 1936
 Data sources: © Crown copyright and database rights 2026 Ordnance Survey 0100031673. Contains OS data © Crown Copyright and database right 2020. Sources: Esri, TomTom, Garmin, FAO, NOAA, USGS, © OpenStreetMap contributors, and the GIS User Community

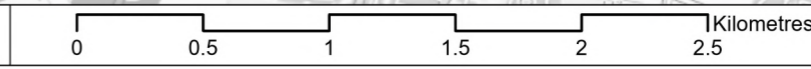
PROJECT TITLE
 Hampshire Water Transfer and Water Recycling Project

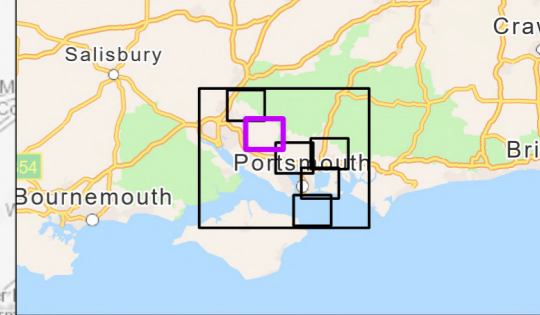
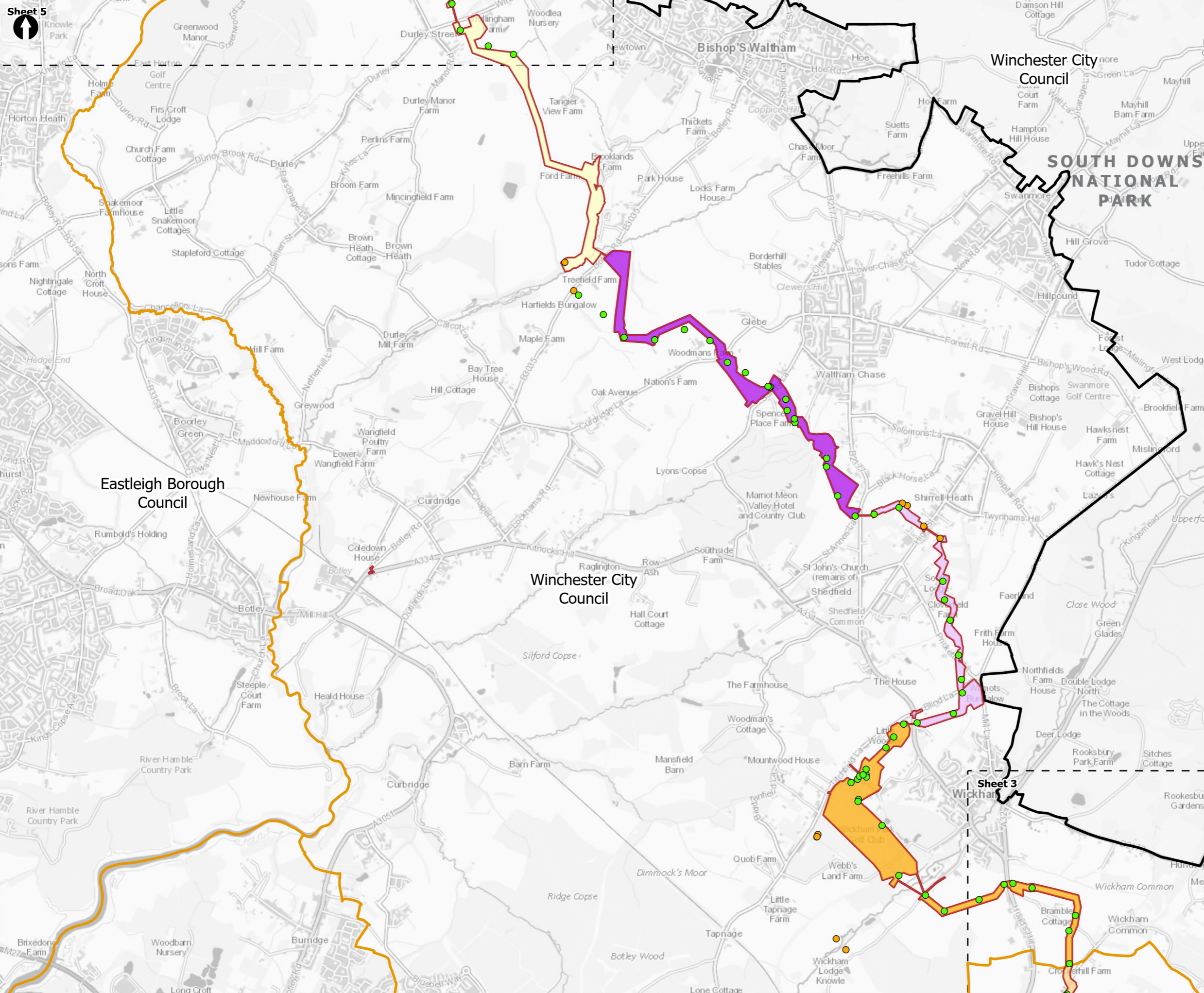


Figure 19.3
 Complete Ground Investigation
 Sheet 3 of 7

Drawn DL	GIS Checked MW	Checked MP	Approved AK
Scale at A3 1:30,000	Status Final	Revision 05	Security STD

Drawing Number
PC5223-RHD-ES-ZZ-D-Z-0083





Order Limits

Sheet Extent Boxes 1:30K

National Parks

Local planning authorities

- Completed GI Locations Phase 2 - (03/08/2023)
- Completed GI Locations Phase 3b (07/06/2024)
- Completed GI Locations Phase 3c (07/06/2024)

Pipeline between the Water Recycling Plant site and Otterbourne Water Supply Works

- Section F: Boarhunt to Crockerhill
- Section G: Crockerhill to Wickham
- Section H: Wickham to Shedfield
- Section J: Shedfield to the River Hamble
- Section K: The River Hamble to Lower Upham

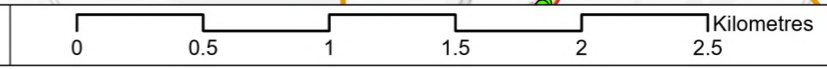
Coordinate system: British National Grid; Datum: OSGB 1936
 Data sources: © Crown copyright and database rights 2026 Ordnance Survey 0100031673. Contains OS data © Crown Copyright and database right 2020, Sources: Esri, TomTom, Garmin, FAO, NOAA, USGS, © OpenStreetMap contributors, and the GIS User Community

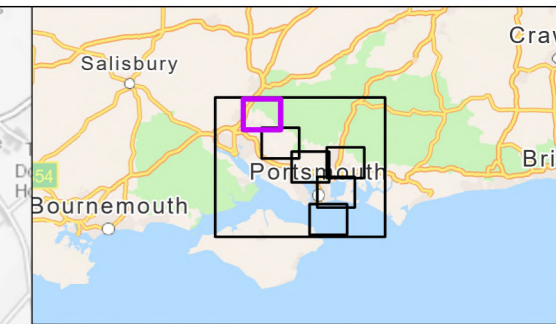
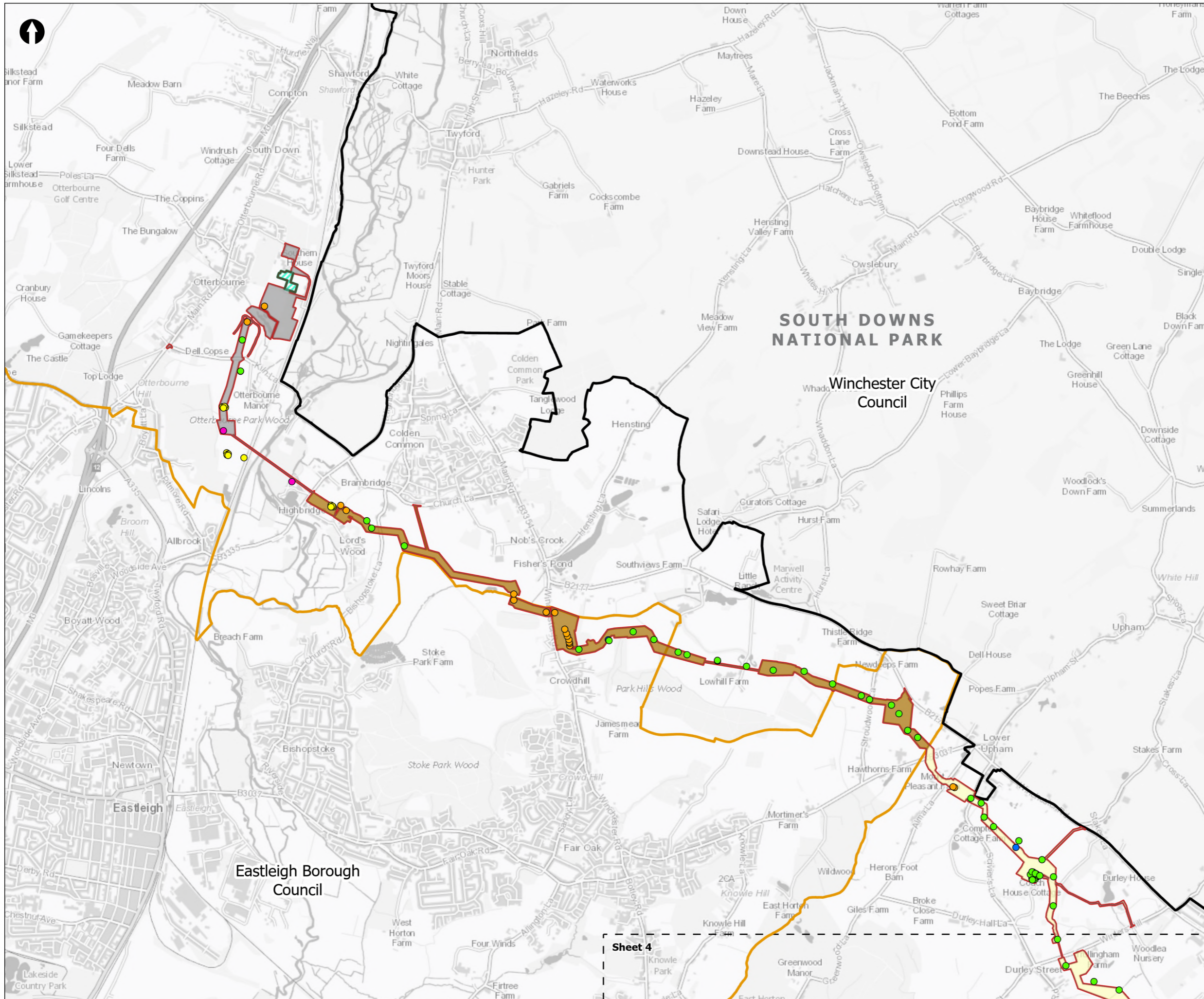
PROJECT TITLE
 Hampshire Water Transfer and Water Recycling Project



Figure 19.3
 Complete Ground Investigation
 Sheet 4 of 7

Drawn DL	GIS Checked MW	Checked MP	Approved AK
Scale at A3 1:30,000	Status Final	Revision 05	Security STD





Order Limits

Sheet Extent Boxes 1:30K

National Parks

Local planning authorities

- Completed GI Locations Phase 1 - (16/08/2023)
- Completed GI Locations Phase 2 - (03/08/2023)
- Completed GI Locations Phase 3a (07/06/2024)
- Completed GI Locations Phase 3b (07/06/2024)
- Completed GI Locations Phase 3c (07/06/2024)

Pipeline between the Water Recycling Plant site and Otterbourne Water Supply Works

- Section K: The River Hamble to Lower Upham
- Section L: Lower Upham to Brambridge
- Section M: Brambridge to Otterbourne Water Supply Works
- Limits of Deviation for Otterbourne INNS Treatment Plant

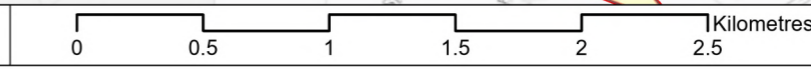
Coordinate system: British National Grid; Datum: OSGB 1936
 Data sources: © Crown copyright and database rights 2026 Ordnance Survey 0100031673. Contains OS data © Crown Copyright and database right 2020, Sources: Esri, TomTom, Garmin, FAO, NOAA, USGS, © OpenStreetMap contributors, and the GIS User Community

PROJECT TITLE
 Hampshire Water Transfer and Water Recycling Project

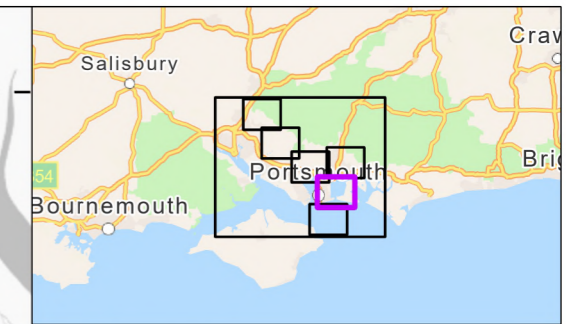
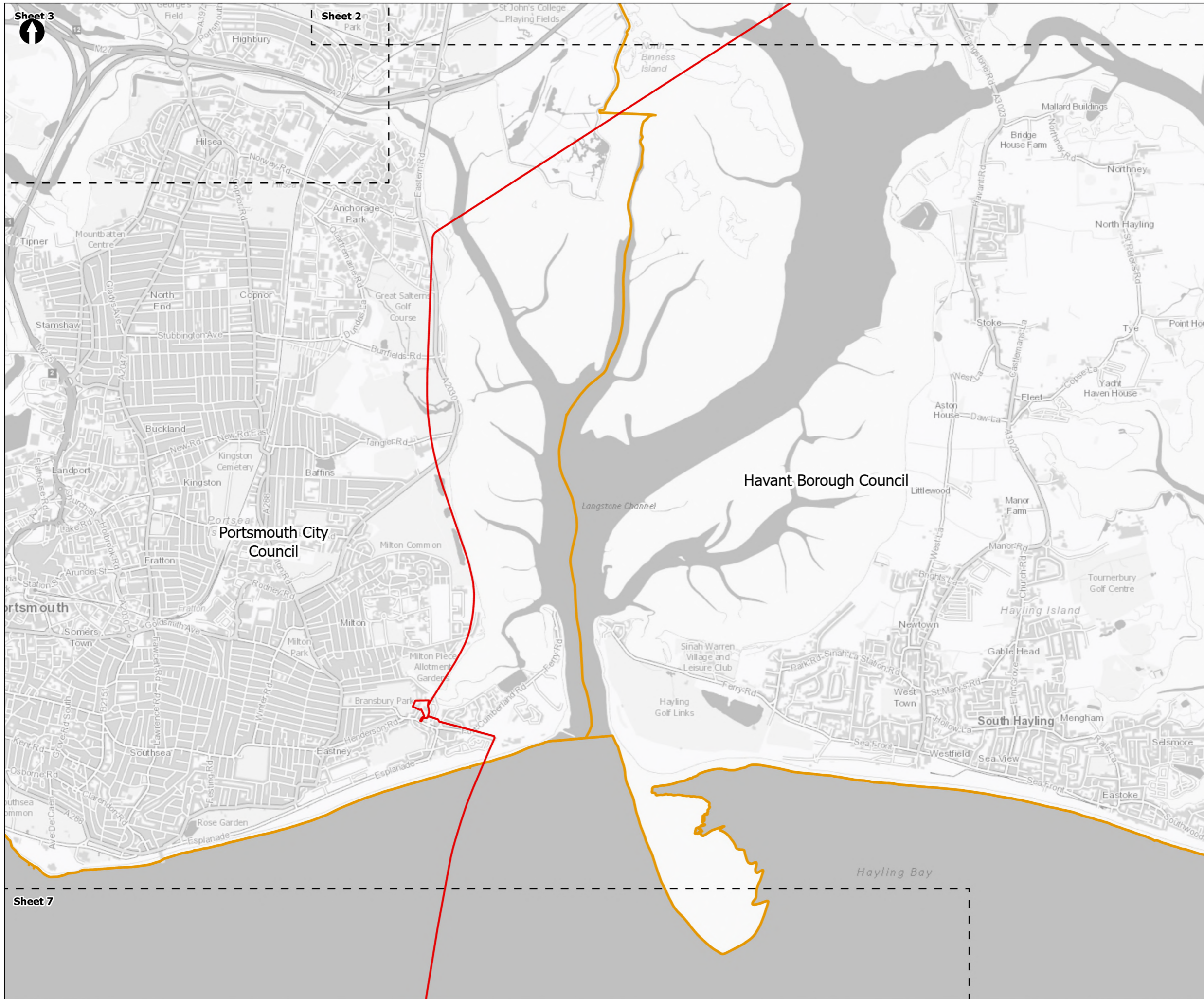


Figure 19.3
 Complete Ground Investigation
 Sheet 5 of 7

Drawn DL	GIS Checked MW	Checked MP	Approved AK
Scale at A3 1:30,000	Status Final	Revision 05	Security STD



Drawing Number
PC5223-RHD-ES-ZZ-D-Z-0083



Order Limits
Sheet Extent Boxes 1:30K
Local planning authorities

Coordinate system: British National Grid; Datum: OSGB 1936
 Data sources: © Crown copyright and database rights 2026 Ordnance Survey 0100031673. Contains OS data © Crown Copyright and database right 2020. Sources: Esri, TomTom, Garmin, FAO, NOAA, USGS, © OpenStreetMap contributors, and the GIS User Community

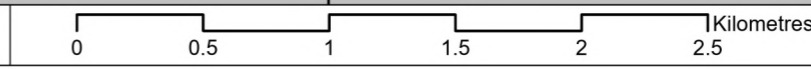
PROJECT TITLE
Hampshire Water Transfer and Water Recycling Project



Figure 19.3
Complete Ground Investigation
Sheet 6 of 7

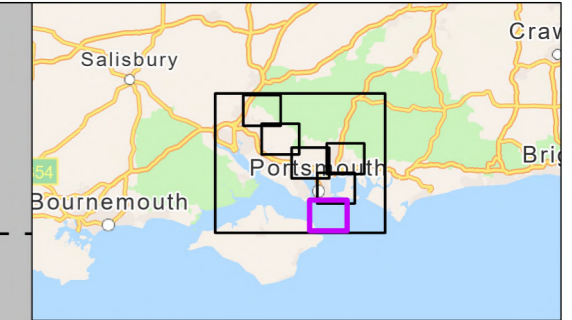
Drawn DL	GIS Checked MW	Checked MP	Approved AK
Scale at A3 1:30,000	Status Final	Revision 05	Security STD


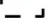

Drawing Number
PC5223-RHD-ES-ZZ-D-Z-0083





Sheet 6



 Order Limits
 Sheet Extent Boxes 1:30K
 Local planning authorities

Spithead



Coordinate system: British National Grid; Datum: OSGB 1936
 Data sources: © Crown copyright and database rights 2026 Ordnance Survey 0100031673. Contains OS data © Crown Copyright and database right 2020, Sources: Esri, TomTom, Garmin, FAO, NOAA, USGS, © OpenStreetMap contributors, and the GIS User Community

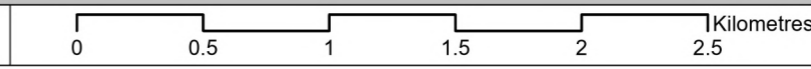
PROJECT TITLE
 Hampshire Water Transfer and Water Recycling Project



Figure 19.3
 Complete Ground Investigation
 Sheet 7 of 7

Drawn DL	GIS Checked MW	Checked MP	Approved AK
Scale at A3 1:30,000	Status Final	Revision 05	Security STD

© Southern Water 2026
 This document is issued for the party which commissioned it and for specific purposes connected with the captioned project only. It should not be relied upon by any other party or used for any other purpose.
 We accept no responsibility for the consequences of this document being relied upon by any other party, or being used for any other purpose, or containing any error or omission which is due to an error or omission in data supplied to us by other parties.



Drawing Number
PC5223-RHD-ES-ZZ-D-Z-0083